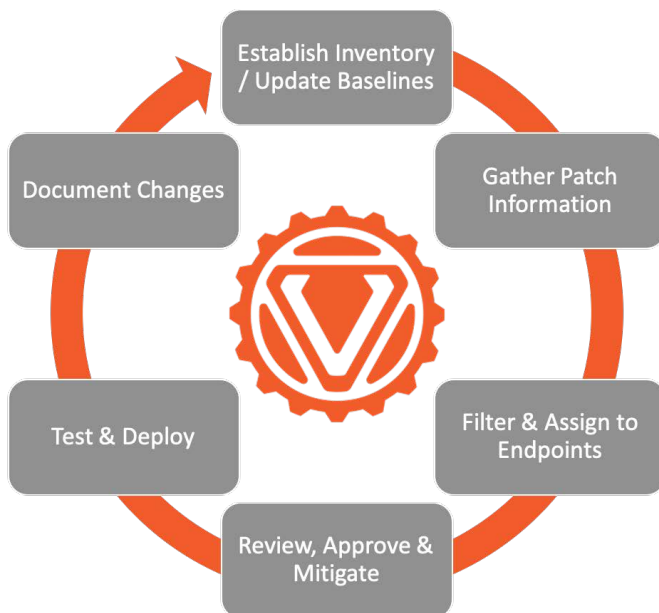


DATA SHEET

PATCH MANAGEMENT

Simplify and streamline OT / ICS patch management with Verve Security Center [VSC]



SUMMARY

Perhaps the single most difficult task in an operational environment is the ability to keep up with patching.

Tracking what patch is in scope, if it is approved by the vendor, which devices it belongs on and what the current status of that machine is can be overwhelming.

Add the need to run a system profile and backup on the target system prior to patching and it is no surprise most organizations are woefully behind on patching and spend a disproportionate amount of time manually tracking and managing patch programs.

BENEFITS

- Lower labor costs of patch discovery & evaluation and assigned to asset
- Lower labor costs of testing & deployment
- Faster time for relevance evaluation
- Lower cost and simplification of compliance reporting
- Faster mean-time-to-remediate using flexible deployment functionality

FEATURES

- Automated missing patch identification
- Filter all patches for relevance
- Create patch packages for 3rd party apps
- Automatic scheduling and deployment
- Roll back patches if needed
- Agent can mitigate or close ports and services if a patch is not supported



VERVE

A ROCKWELL AUTOMATION COMPANY

VERVE PATCH MANAGER

The Verve Patch Manager simplifies and streamlines ICS patch management. When combined with Verve Protection Services, it enables turnkey patch discovery, evaluation, and deployment.

The fundamental value comes from the 100% asset visibility our solution provides. By aggregating all assets and characteristics into a single database, we filter to specific sets of systems in scope for emerging patches. More importantly, the filtered report is automatic, accurate and dynamic.

The VSC console also provides the ability for users to annotate, review, approve or delay patches all tracked in a single, familiar GUI. With direct ties to Active Directory different rights can be assigned to different users in support of the overall program. The same console also allows users to build custom patching packages to manage updates to third party apps like historian or connectivity packages.

VSC's ability to take remediation actions allow users to schedule and deploy approved patches to endpoints under specifically controlled conditions.

Coupled with a backup deployment prior to patching or to verify changes the patch may have made via our change management portal, the VSC ties all aspects of patching into a single location.

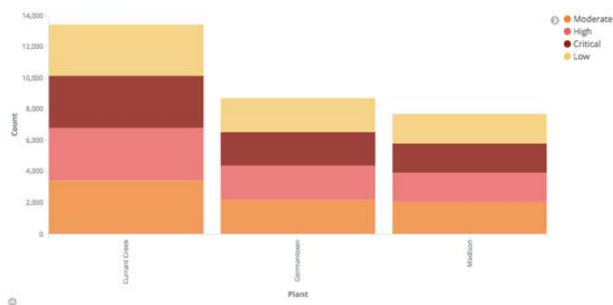
For OS based systems, if a patch is deemed too risky to deploy, but a mitigating factor such as disabling a service or port on the end system is preferred, our console manages that.

By simply extending the inherent technology that profiles and filters patches to identify and disable the in-scope services our patching console provides mitigation.

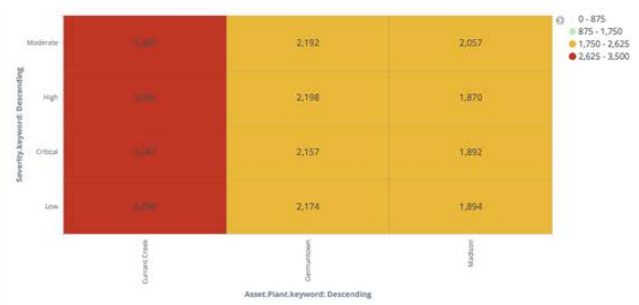
Patch Count by Plant (Gauge)



Patches by Patch Severity and Plant



Patches by Patch Severity by Plant (HeatMap)



Enabling automated patch management across facilities